



# EQUIPMENT & DIAMOND TOOLING

PRODUCT CATALOG



**WE ARE THE  
MANUFACTURER  
DISTRIBUTOR  
INNOVATOR  
TECHNICAL SUPPORT  
& PARTNER  
TO COMPANIES  
WORLDWIDE**

**SIMIRON** has been developing products that help people protect their world for over 30 years. Whether it is residential, commercial, or industrial flooring, we have you covered.

Our products are manufactured using the highest quality raw materials to deliver high-performance results, plus they are user-friendly and ensure consistent results on the job site every time.



**MADE  
IN THE  
USA**

# **EQUIPMENT & DIAMOND TOOLING**

## **PRODUCT CATALOG**

### **> INDEX**

INDUSTRIAL EQUIPMENT .....	4
AGGREGATE MAP.....	5
METAL BOND TOOLING .....	6 - 7
REMOVAL TOOLING .....	8
POLISHING TOOLING .....	9 - 10
TOOLING ADAPTERS .....	11



SIMIRON

INDUSTRIAL FLOOR EQUIPMENT

**SIMIRON’S Industrial Grinders** are designed for reliability and longevity. When paired with Simiron diamond tools, our planetary grinders provide an even floor surface. Our assortment of flexible grinders provides answers for every floor or job.

**SIMIRON Dust Extractors** are designed to clean construction areas and be connected to electrical machines such as drills, grinders etc. The machine is suitable for picking up dry, non-flammable dust and debris in and indoor environment. It is not suitable for picking up liquids.



**SG600**  
INDUSTRIAL FLOOR GRINDER

The **SG600** electric floor grinder prepares concrete for coating materials, removes existing coatings and underlayments, and polishes concrete. This grinder can grind wet or dry and has a 3-disc planetary grinding head. It has a 6-gallon water capacity and a vacuum port for dry grinding. The **SG600** is compatible with **SIMIRON** vacuum systems.

SPECIFICATIONS	
POWER SOURCE	Electric
OUTPUT POWER	7.5 HP (5.5 kW)
REQUIRED CIRCUIT	1 or 3 Phase/220-240 volts/19 AMP
RPM	300 - 1,600
GRINDING WIDTH	600 mm (25")
GRINDING DISCS	3
MACHINE WEIGHT	620 lbs

Recommended Extractor - **SV3**



**SG16**  
INDUSTRIAL FLOOR GRINDER

The **SG16** Grinder is a lightweight 110-volt grinder perfect for commercial projects, garages,basements, and difficult to access areas. The **SG16** utilizes innovative engineering and design to maximize user safety and productivity. The unique carriage design includes a floating head, which provides increased surface contact and reduced amp draw resulting in faster and more efficient operation.

SPECIFICATIONS	
POWER SOURCE	Electric
OUTPUT POWER	1.5 HP
REQUIRED CIRCUIT	1 Phase/110 volt/ 9.5 AMP
RPM	165 - 300
GRINDING WIDTH	400 mm (16")
GRINDING DISCS	1
MACHINE WEIGHT	135 lbs

Recommended Extractors - **SV3**



**SV3**  
CONCRETE DUST EXTRACTOR

The **SV3** utilizes a single HEPA filter system for efficient cleaning performance. It is designed for use with **SIMIRON** Floor Preparation Equipment, or any application where dust collection is needed. The **SV3** is only for DRY materials, and should never be used for wet applications.

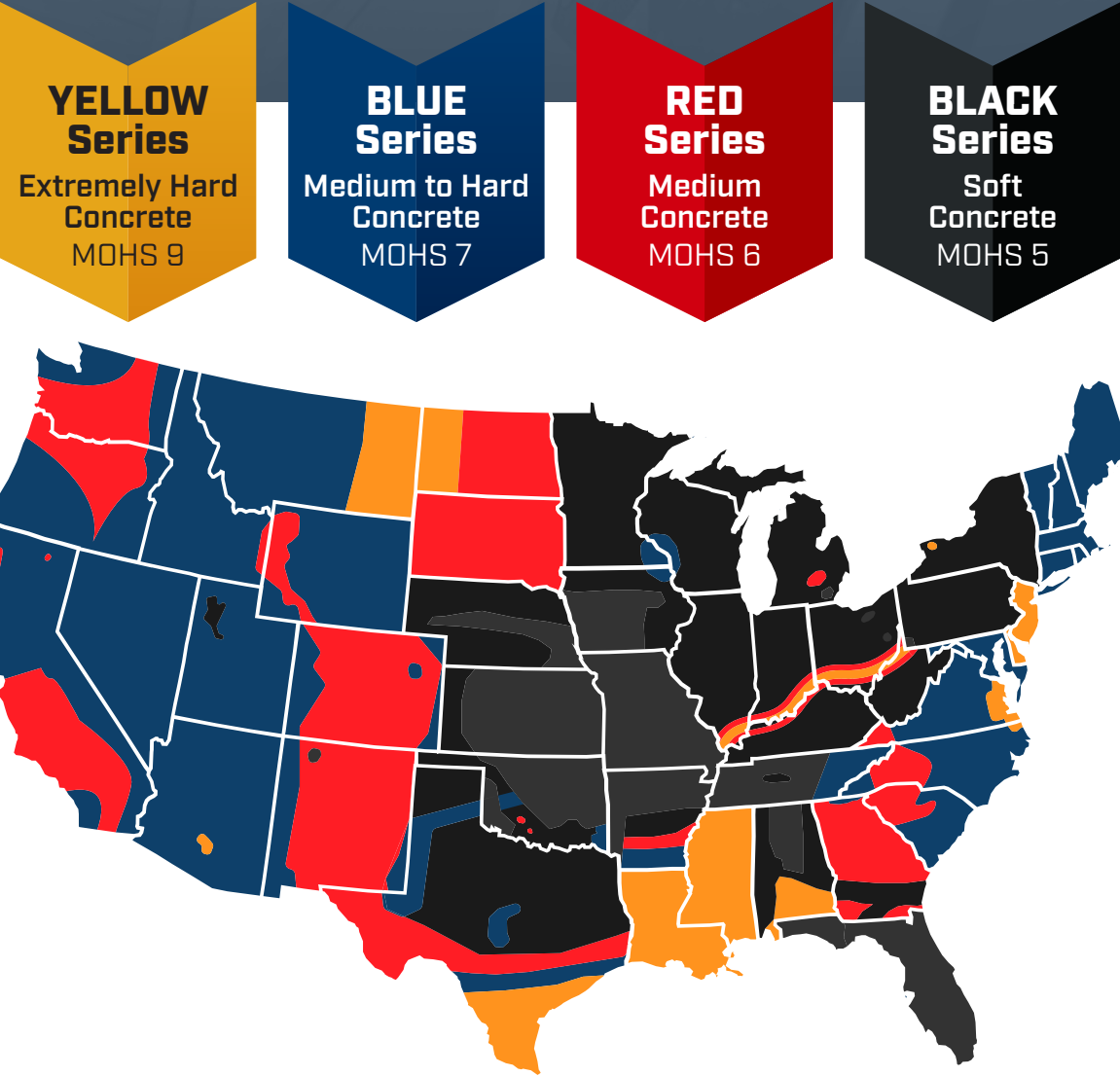
SPECIFICATIONS	
POWER SOURCE	Electric
OUTPUT POWER	1 Phase/110 volt/20 AMP
MOTOR OUTPUT	4 HP (3 Kw)
VACUUM (MBAR)	200
WATER LIFT	100 in.
CFM	265
FILTER CAPACITY	0.3 um
FILTER TYPE	H13 HEPA
WEIGHT	125 lbs
BAG TYPE	Continuous

Recommended Grinders - **SG500, SG20, SG16**

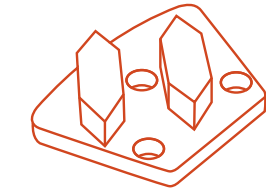
UNITED STATES AGGREGATE MAP  
FOR DIAMOND BLADE SELECTION

Contractors that cut and grind concrete must select diamond blades and abrasives based on the aggregate hardness in their region.

Identifying the aggregate type in concrete or asphalt affects blade performance and bit selection. Stone, gravel, and sand used in concrete vary by area and geographic region.



This map illustrates the range of abrasive and medium-hard aggregates found around the world, from the soft, talc-like talc to the hard, flint-like chert, and the different medium-to-medium-hard levels and abrasive characteristics in between. As a general guidance for sawing and drilling blade selection, it illustrates the aggregate and hardness that are likely to be encountered in each state. Even while aggregate size and type might vary widely within a particular region, it is typically true that aggregates in specific geographic regions are similar in size and composition. Aggregate from across the United States is increasingly being delivered to this region due to a lack in local supply of a particular sort of material. This aggregate map provides an overview of the most frequent aggregates in the area.



# METAL BOND

Simiron has a complete range of metal bond tooling designed to ensure maximum life and performance rate for all concrete floors depending on hardness. Every metal bond series corresponds with the MOH's hardness scale, helping contractors confidently know what metal bond series to use on every concrete grinding project.

RED Series—Medium Concrete

MOHS 6

DIAMOND Metal Double Segment—Medium Bond

GRIT	DESCRIPTION	PART #
6	Designed for coating removal, thin mastic removal, exposing large aggregate, and prepping concrete for applying coatings <b>10-25 mils.</b>	40006815
16	Designed for coating removal, thin mastic removal, exposing large aggregate, and prepping concrete for applying coatings <b>10-20 mils.</b>	40006471
30	Designed for coating removal, thin mastic removal, exposing large aggregate, and prepping concrete for applying coatings under <b>10 mils.</b>	40006464

ROUND Metal Double Segment—Medium Bond

GRIT	DESCRIPTION	PART #
70	Designed as a first step for new concrete polishing, honing concrete, and removing scratches from courser grits. Ideal for concrete stains.	40006501

CAP-CUTTER Metal Double Segment—Medium Bond

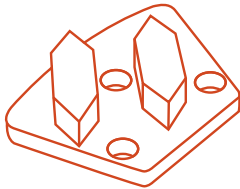
GRIT	DESCRIPTION	PART #
16	Designed to remove the dense cap on a hard-troweled concrete floor more efficiently than standard tools. The alternating layers of hard and soft metal/diamond and 16 grit diamond make are more effective than tools with larger size diamonds.	40006792

RECTANGLE Metal Single Segment—Medium Bond

GRIT	DESCRIPTION	PART #
25	Single segment diamond for smaller grinders with less head pressure. Designed for coating removal, thin mastic removal, exposing large aggregate, and prepping concrete for applying coatings under <b>10 mils.</b>	40006808

3” 10-SEGMENT Metal Bond—Medium Bond

GRIT	DESCRIPTION	PART #
16	Excellent for grinding medium to hard concrete as a first step in the polishing process. Extremely long life and excellent scratch pattern for concrete polishing process.	40008192
30	Excellent for grinding medium to hard concrete as a first step in the polishing process. Extremely long life and excellent scratch pattern for concrete polishing process.	40006518
70	Excellent for grinding medium to hard concrete as a first step in the polishing process. Extremely long life and excellent scratch pattern for concrete polishing process.	40006525
120	Excellent for grinding medium to hard concrete as a first step in the polishing process. Extremely long life and excellent scratch pattern for concrete polishing process.	40006532



# METAL BOND

RED Series—Medium Concrete

MOHS 6

LIGHTNING 7” Cup Wheel—Medium Bond

GRIT	DESCRIPTION	PART #
25	Single segment diamond for smaller grinders with less head pressure. Designed for coating removal, thin mastic removal, exposing large aggregate, and prepping concrete for applying coatings under <b>10 mils.</b>	40006259

S-SHAPE 7” Cup Wheel—Medium Bond

GRIT	DESCRIPTION	PART #
30	The aggressive S segment shape has more leading edges to expose more diamonds leading to faster prep and coating removal.	40006266

ARROW 7” Cup Wheel—Medium Bond

GRIT	DESCRIPTION	PART #
30	High performance cutting wheel. The unique arrow shape segments work great for cutting hard sufaces and removing thin glue.	40006273

DOUBLE ROW 7” Cup Wheel—Medium Bond

GRIT	DESCRIPTION	PART #
30	Double row diamond segments are designed for smooth grinding and extra life. Can be used wet or dry.	40006549

BLACK Series—Soft Concrete

MOHS 5

DIAMOND Metal Double Segment—Soft Bond

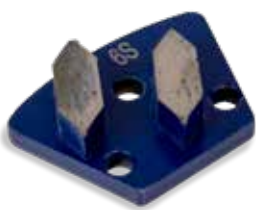
GRIT	DESCRIPTION	PART #
6	Designed for coating removal, thin mastic removal, exposing large aggregate, and prepping concrete for applying coatings <b>10-25 mils.</b>	40006839
16	Designed for coating removal, thin mastic removal, exposing large aggregate, and prepping concrete for applying coatings <b>10-20 mils.</b>	40006488
30	Designed for coating removal, thin mastic removal, exposing large aggregate, and prepping concrete for applying coatings under <b>10 mils.</b>	40006556

BLUE Series—Hard to Medium Concrete

MOHS 7

DIAMOND Metal Double Segment—Hard to Medium Bond

GRIT	DESCRIPTION	PART #
6	Designed for coating removal, thin mastic removal, exposing large aggregate, and prepping concrete for applying coatings <b>10-25 mils.</b>	40006822
16	Designed for coating removal, thin mastic removal, exposing large aggregate, and prepping concrete for applying coatings <b>10-20 mils.</b>	40006440
30	Designed for coating removal, thin mastic removal, exposing large aggregate, and prepping concrete for applying coatings under <b>10 mils.</b>	40006457





# REMOVAL

Simiron has a complete line of removal tooling to maximize the efficiency of removing thin to thick coatings or systems. Using these removal tools saves REMOVAL time and money to finish the job as quickly as possible.

## REMOVAL TOOLING

### PCD Pirahna Large Tooth

CATEGORY	DESCRIPTION	PART #	SIDE
REMOVAL	The most aggressive removal tool available. These PCD diamonds are designed to rip through the toughest and thickest of coatings.	40006938	R
REMOVAL	The most aggressive removal tool available. These PCD diamonds are designed to rip through the toughest and thickest of coatings.	40006846	L

### PCD 3 Round With Wear Bar

CATEGORY	DESCRIPTION	PART #	SIDE
REMOVAL	Removal tool for thick coating removal. Designed with a wear bar that helps remove guage marks during the removal process saving time and money.	40006921	R
REMOVAL	Removal tool for thick coating removal. Designed with a wear bar that helps remove guage marks during the removal process saving time and money.	40006860	L

### PCD Pirahna Small Tooth

CATEGORY	DESCRIPTION	PART #	SIDE
REMOVAL	Very aggressive and fast removal tool designed to rip through the tough coatings.	40006914	R
REMOVAL	Very aggressive and fast removal tool designed to rip through the tough coatings.	40006853	L

### PCD 7” Cup Wheel—9 - 1/4”

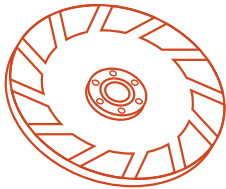
CATEGORY	DESCRIPTION	PART #
REMOVAL	PCD Cup Wheels are designed for fast removal of epoxy, paint, glue, acrylics, mastics, adhesives, urethane, elastic coatings, etc. concrete surfaces. The quarter-round segments on our wheels are for thicker coatings up to 3mm (1/8 in) and provide longer wheel life than PCD chip segment wheels.	40006280

### PCD 7” Cup Wheel—12 - 1/8”

CATEGORY	DESCRIPTION	PART #
REMOVAL	These advanced PCD Cup Wheels are more aggressive and last longer than your traditional diamond cup wheels. They're designed for fast productivity for removal of adhesives, epoxy, urethane, paint, mastic, and other floor coatings.	40006303

### PCD 7” Cup Wheel—6 - 1/4”

CATEGORY	DESCRIPTION	PART #
REMOVAL	PCD Cup Wheels are designed for fast removal of epoxy, paint, glue, acrylics, mastics, adhesives, urethane, elastic coatings, etc. concrete surfaces. The quarter-round segments on our wheels are for thicker coatings up to 3mm (1/8 in) and provide longer wheel life than PCD chip segment wheels.	40006297



# POLISHING

Simiron Ceramic Cup Wheels make edgework easy. These cup wheels eliminate the need for metal bond cup wheels and eliminate steps off edging while providing great results.

## CERAMIC—Cup Wheels

### CERAMIC 7” Cup Wheel

GRIT	DESCRIPTION	PART #
30	Ceramic grinding cup wheels are designed to replace metal grinding cups. They cut far faster than metals and leave a smooth scratch pattern for such an aggressive grinding tool. Excellent for concrete polishing	40006310

### CERAMIC 7” Cup Wheel

GRIT	DESCRIPTION	PART #
50	Ceramic grinding cup wheels are designed to replace metal grinding cups. They cut far faster than metals and leave a smooth scratch pattern for such an aggressive grinding tool. Excellent for concrete polishing	40006327

### CERAMIC 7” Cup Wheel

GRIT	DESCRIPTION	PART #
100	Ceramic grinding cup wheels are designed to replace metal grinding cups. They cut far faster than metals and leave a smooth scratch pattern for such an aggressive grinding tool. Excellent for concrete polishing	40006334

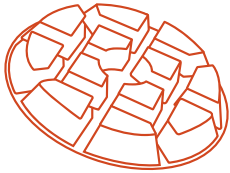
### CERAMIC 7” Cup Wheel

GRIT	DESCRIPTION	PART #
200	Ceramic grinding cup wheels are designed to replace metal grinding cups. They cut far faster than metals and leave a smooth scratch pattern for such an aggressive grinding tool. Excellent for concrete polishing	40006341

### CERAMIC 7” Cup Wheel

GRIT	DESCRIPTION	PART #
400	Ceramic grinding cup wheels are designed to replace metal grinding cups. They cut far faster than metals and leave a smooth scratch pattern for such an aggressive grinding tool. Excellent for concrete polishing	40006358





# POLISHING

Simiron Ceramic Cup Wheels make edgework easy. These cup wheels eliminate the need for metal bond cup wheels and eliminate steps off edging while providing great results.

## POLISHING PAD—Hybrid

### DRY Hybrid Resin Polishing pad

CATEGORY	DESCRIPTION	PART #
30	Can be the starting point on a cream or salt and pepper application. Sometimes needed to remove cure and seal from new construction.	40006365

### DRY Hybrid Resin Polishing pad

CATEGORY	DESCRIPTION	PART #
50	Can be the starting point on a cream or salt and pepper application. Removed 30 grit resin scratches.	40006372

### DRY Hybrid Resin Polishing pad

CATEGORY	DESCRIPTION	PART #
100	Can be the starting point on a cream or salt and pepper application. Removed 50 grit resin scratches.	40006389

### DRY Hybrid Resin Polishing pad

CATEGORY	DESCRIPTION	PART #
200	Removes 100 grit resin scratches or next step after transitioning from hybrid resins.	40006396

### DRY Hybrid Resin Polishing pad

CATEGORY	DESCRIPTION	PART #
400	Removes 200 grit resin scratches or next step after transitioning from hybrid resins.	40006402

### DRY Hybrid Resin Polishing pad

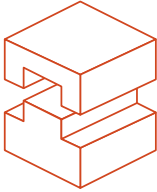
CATEGORY	DESCRIPTION	PART #
800	Removes 400 grit resin scratches or next step after transitioning from hybrid resins.	40006419

### DRY Hybrid Resin Polishing pad

CATEGORY	DESCRIPTION	PART #
1500	Removes 800 grit resin scratches or next step after transitioning from hybrid resins.	40006426

### DRY Hybrid Resin Polishing pad

CATEGORY	DESCRIPTION	PART #
3000	Removes 1500 grit resin scratches or next step after transitioning from hybrid resins.	40006433



# ADAPTERS

These SIMIRON approved adapters easily attaches to floor grinding machines, and allows the fast change system to be outfitted with diamond tools. Installation is very simple and quick which simply slides in the adapter and attach the tooling.

## ADAPTERS—Quick Change

### HUSQVARNA Quick Change Adapter

DESCRIPTION	PART #
Quick change adapter will attach to a Husqvarna machine allowing the use of Simiron tooling.	40006945

### SASE Quick Change Adapter

DESCRIPTION	PART #
Quick change adapter will attach to a SASE machine allowing the use of Simiron tooling.	40006969

### HTC Quick Change Adapter

DESCRIPTION	PART #
Quick change adapter will attach to a HTC machine allowing the use of Simiron tooling.	40006976

### LAVINA Quick Change Adapter

DESCRIPTION	PART #
Quick change adapter will attach to a Lavina machine allowing the use of Simiron tooling.	40006952





[SIMIRON.COM](http://SIMIRON.COM) | [SHOP.SIMIRON.COM](http://SHOP.SIMIRON.COM)

**SIMIRON INC.**  
**CORPORATE HEADQUARTERS**  
3000 Research Drive  
Rochester Hills, MI 48309  
(248) 686-3600

